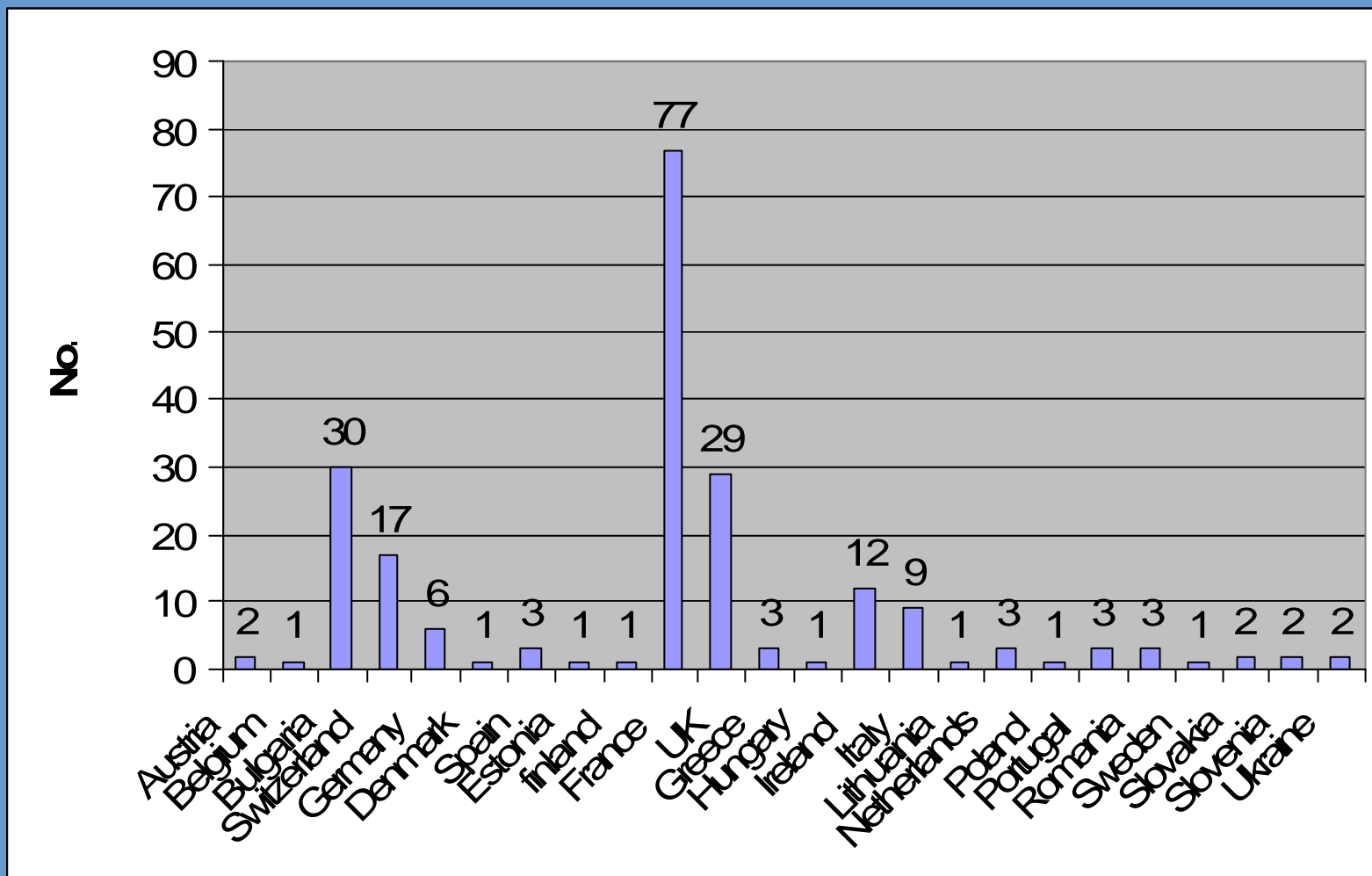


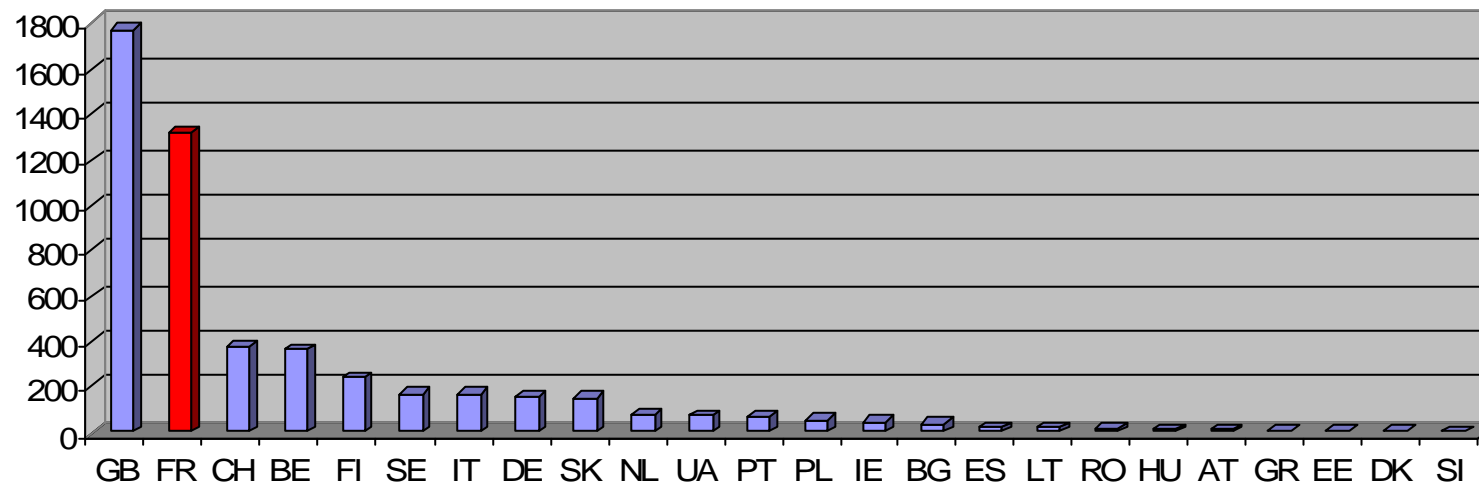
# Comment se situent les villes françaises dans la Campagne Display<sup>®</sup> ?

# Villes participants par pays (211) – 06 octobre 2006



# La position de la France

Nombres d'affiches par pays



# 4050 bâtiments (5185 posters) en total

fin septembre 2006

La France 1317 posters (25% du total),  
dont :

- 68 crèches,
- 533 écoles générales
- 5 professionnelles
- 148 administratifs
- 123 gymnases
- 141 sociales culturelles

# Bâtiments regroupés par type

- 193 Crèches
- 2349 écoles générales
- 103 écoles professionnelles
- 641 administratifs
- 69 piscines
- 241 gymnases
- 407 socio culturelles
- 110 centres médicales
- 224 logements collectifs

# CLASSIFICATIONS DISPLAY PAR TYPE DE BATIMENT

Tableau 1 Système de classification pour le ratio d'énergie primaire

kWh/ (m <sup>2</sup> .an)	Educatif				Installation sportive		7	8	9	10	11
	1	2	3	4	5	6					
	Crèche / Jardin d'enfant	Enseignement général	Enseignement professionnel	Administratif	Piscine	Gymnase	Entrepôt	Socio-Culturel	Dispensaire médical	Centre de secours	Logement collectif
<b>A</b>	75 = X	75 = X	75 = X	X = 75	X = 500	X = 75	X = 250	X = 75	X = 250	X = 100	X = 50
<b>B</b>	75 < X = 145	75 < X = 140	75 < X = 145	75 < X = 140	500 < X = 1000	75 < X = 150	250 < X = 350	75 < X = 160	250 < X = 350	100 < X = 140	50 < X = 100
<b>C</b>	145 < X = 215	140 < X = 205	145 < X = 215	140 < X = 205	1000 < X = 1500	150 < X = 225	350 < X = 450	160 < X = 245	350 < X = 450	140 < X = 180	100 < X = 150
<b>D</b>	215 < X = 285	205 < X = 270	215 < X = 285	205 < X = 270	1500 < X = 2000	225 < X = 300	450 < X = 550	245 < X = 330	450 < X = 550	180 < X = 220	150 < X = 200
<b>E</b>	285 < X = 355	270 < X = 335	285 < X = 355	270 < X = 335	2000 < X = 2500	300 < X = 375	550 < X = 650	330 < X = 415	550 < X = 650	220 < X = 260	200 < X = 250
<b>F</b>	355 < X = 425	335 < X = 400	355 < X = 425	335 < X = 400	2500 < X = 3000	375 < X = 450	650 < X = 750	415 < X = 500	650 < X = 750	260 < X = 300	250 < X = 300
<b>G</b>	X > 425	X > 400	X > 425	X > 400	X > 3000	X > 450	X > 750	X > 500	X > 750	X > 300	X > 300

Tableau 3 Système de classification pour le ratio de CO<sub>2</sub>

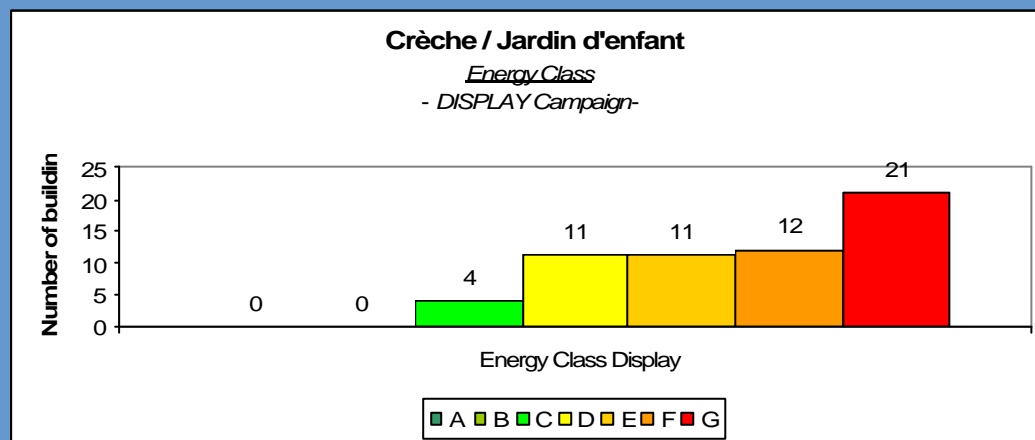
kg/ (m <sup>2</sup> .an)	Educatif				Installation sportive		7	8	9	10	11
	1	2	3	4	5	6					
	Crèche / Jardin d'enfant	Enseign ement général	Enseign ement professi onnel	Adminis tratif	Piscine	Gymnase	Entrepôt	Socio- Culturel	Dispens aire médical	Centre de secours	Logeme nt collectif
<b>A</b>	15 = X	15 = X	15 = X	15 = X	X = 100	X = 15	X = 50	X = 15	X = 50	X = 20	X = 10
<b>B</b>	15 < X = 29	15 < X = 28	15 < X = 29	15 < X = 28	100 < X = 200	15 < X = 30	50 < X = 70	15 < X = 32	50 < X = 70	20 < X = 28	10 < X = 20
<b>C</b>	29 < X = 43	28 < X = 41	29 < X = 43	28 < X = 41	200 < X = 300	30 < X = 45	70 < X = 90	32 < X = 49	70 < X = 90	28 < X = 36	20 < X = 30
<b>D</b>	43 < X = 57	41 < X = 54	43 < X = 57	41 < X = 54	300 < X = 400	45 < X = 60	90 < X = 110	49 < X = 56	90 < X = 110	36 < X = 44	30 < X = 40
<b>E</b>	57 < X = 71	54 < X = 67	57 < X = 71	54 < X = 67	400 < X = 500	60 < X = 75	110 < X = 130	56 < X = 73	110 < X = 130	44 < X = 52	40 < X = 50
<b>F</b>	71 < X = 85	67 < X = 80	71 < X = 85	67 < X = 80	500 < X = 600	75 < X = 90	130 < X = 150	73 < X = 90	130 < X = 150	52 < X = 60	50 < X = 60
<b>G</b>	X > 85	X > 80	X > 85	X > 80	X > 600	X > 90	X > 150	X > 90	X > 150	X > 60	X > 60

Tableau 3 Système de classification pour le ratio d'eau

L/ (m <sup>2</sup> .an)	Educatif				Installation sportive						
	1	2	3	4	5	6	7	8	9	10	11
	Crèche / Jardin d'enfant	Enseign ement général	Enseign ement professi onnel	Administ ratif	Piscine	Gymnase	Entrepôt	Socio- Culturel	Dispens aire médical	Centre de secours	Logeme nt collectif
<b>A</b>	200 = X	100 = X	125 = X	X = 100	X = 400	100 = X	X = 350	X = 50	X = 500	X = 350	X = 500
<b>B</b>	200 < X = 350	100 < X = 225	125 < X = 250	100 < X = 200	400 < X = 600	100 < X = 225	350 < X = 500	50 < X = 125	500 < X = 750	350 < X = 500	500 < X = 750
<b>C</b>	350 < X = 500	225 < X = 350	250 < X = 375	200 < X = 300	600 < X = 800	225 < X = 350	500 < X = 650	125 < X = 200	750 < X = 1000	500 < X = 650	750 < X = 1000
<b>D</b>	500 < X = 650	350 < X = 475	375 < X = 500	300 < X = 400	800 < X = 1000	350 < X = 475	650 < X = 800	200 < X = 275	1000 < X = 1250	650 < X = 800	1000 < X = 1250
<b>E</b>	650 < X = 800	475 < X = 600	500 < X = 625	400 < X = 500	1000 < X = 1200	475 < X = 600	800 < X = 950	275 < X = 350	1250 < X = 1500	800 < X = 950	1250 < X = 1500
<b>F</b>	800 < X = 950	600 < X = 725	625 < X = 750	500 < X = 600	1200 < X = 1400	600 < X = 725	950 < X = 1100	350 < X = 425	1500 < X = 1750	950 < X = 1100	1500 < X = 1750
<b>G</b>	X > 950	X > 725	X > 750	X > 600	X > 1400	X > 725	X > 1100	X > 425	X > 1750	X > 1100	X > 1750



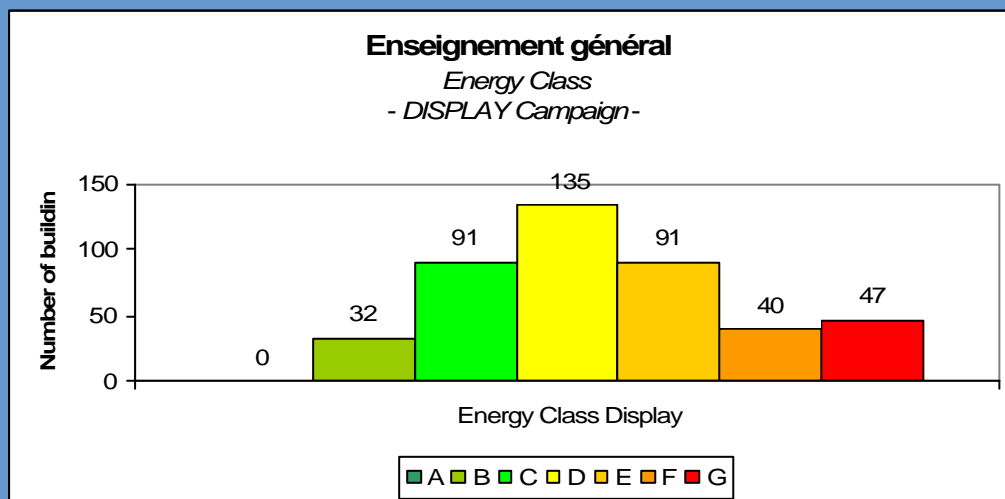
# Crèche



ENERGY CLASS - Crèche / Jardin d'enfant		
Energy Class Display	Number of buildings	%
A	0	0,00
B	0	0,00
C	4	6,78
D	11	18,64
E	11	18,64
F	12	20,34
G	21	35,59
<b>TOTAL</b>	<b>59</b>	<b>100,00</b>

moyenne	412	classe F
div 3	137	classe B

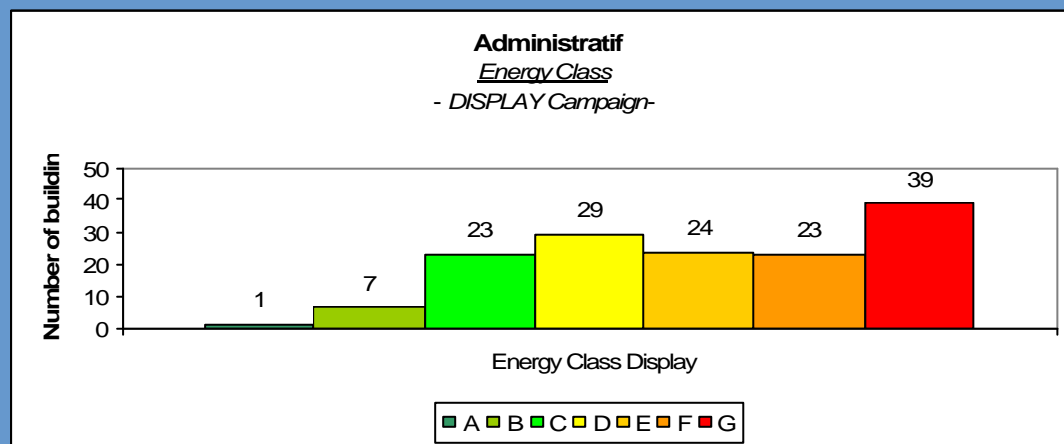
# Enseignement Général



ENERGY CLASS - <i>Enseignement général</i>		
Energy Class Display	Number of buildings	%
A	0	0,00
B	32	7,34
C	91	20,87
D	135	30,96
E	91	20,87
F	40	9,17
G	47	10,78
<b>TOTAL</b>	<b>436</b>	<b>100,00</b>

moyenne	262	classe D
div3	87	classe B

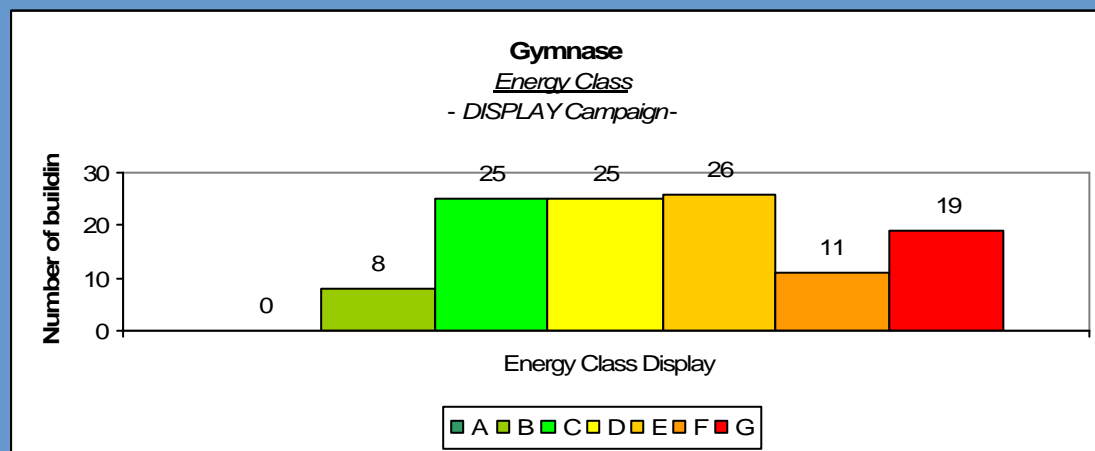
# Administratif



ENERGY CLASS - <i>Administratif</i>		
Energy Class Display	Number of buildings	%
A	1	0,68
B	7	4,79
C	23	15,75
D	29	19,86
E	24	16,44
F	23	15,75
G	39	26,71
<b>TOTAL</b>	<b>146</b>	<b>100,00</b>

moyenne	351	classe F
div 3	117	classe B

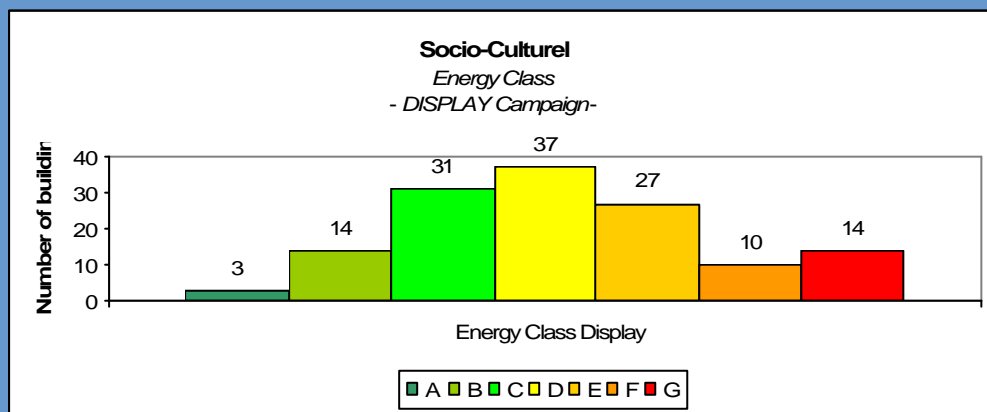
# Gymnase



ENERGY CLASS - Gymnase		
Energy Class Display	Number of buildings	%
A	0	0,00
B	8	7,02
C	25	21,93
D	25	21,93
E	26	22,81
F	11	9,65
G	19	16,67
<b>TOTAL</b>	<b>114</b>	<b>100,00</b>

moyenne	321	classe E
div 3	107	classe B

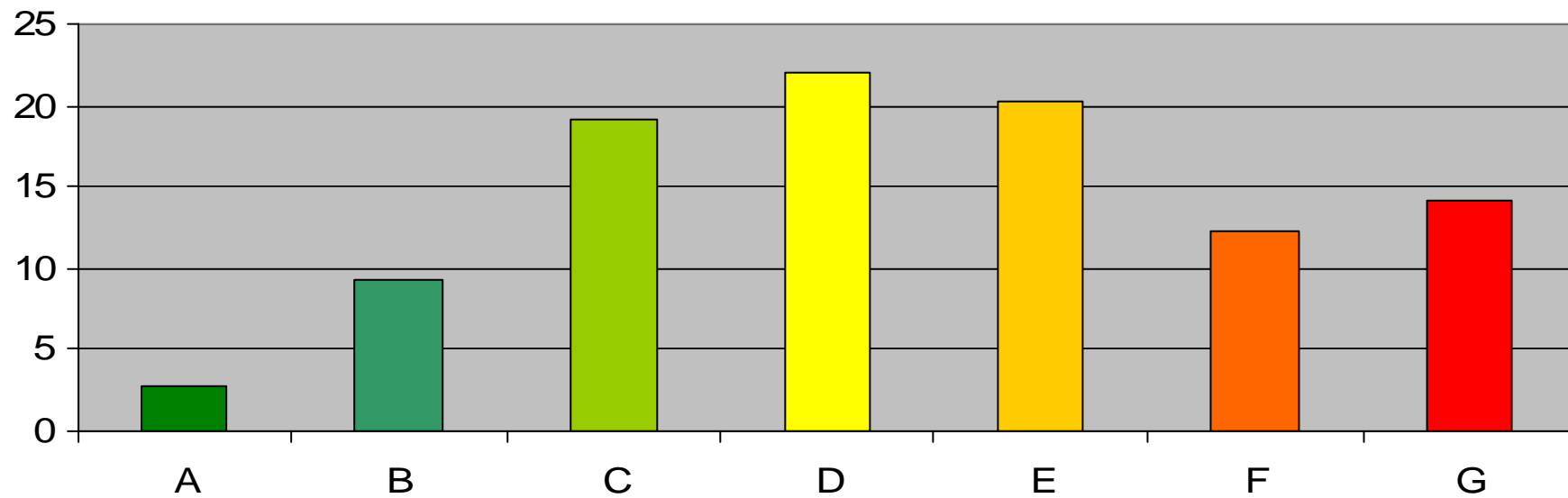
# Socio-Culturel



ENERGY CLASS - Socio-Culturel		
Energy Class Display	Number of buildings	%
A	3	2,21
B	14	10,29
C	31	22,79
D	37	27,21
E	27	19,85
F	10	7,35
G	14	10,29
<b>TOTAL</b>	<b>136</b>	<b>100,00</b>

moyenne	307	classe D
div 3	102	classe B

### Primary energy consumption general schools for Europe Oct 2006 (2718 posters)



# Comparaisons d'écoles en Europe

